

Your generosity transforms lives

Gratitude Report 2023-2024



Our Mission

We carry on the healing mission of Jesus Christ by promoting personal and community health, relieving pain and suffering, and treating each person in a loving and caring way.

This mission drives all that we are and all that we do. Through your generous support as a member of the PeaceHealth family, you embrace the spirit of these beliefs and elevate exceptional, compassionate care for all.

Our Values

Respect

We respect the dignity and appreciate the worth of each person as demonstrated by our compassion, caring and acceptance of individual differences.

Collaboration

We value the involvement, cooperation and creativity of all who work together to promote the health of the community.

Stewardship

We choose to serve the community and hold ourselves accountable to exercise ethical and responsible stewardship in the allocation and utilization of human, financial and environmental resources.

Social Justice

We build and evaluate the structures of our organization and those of society to promote the just distribution of healthcare resources.



A message from

**System Vice President and
Chief Philanthropy Officer, Anne Rasmussen**



Day after day, it is truly amazing to see what is possible in the name of hope and healing. Thanks to the enduring power of philanthropy at PeaceHealth, more lives are changed, more lives are saved and more communities grow healthier by the day. Together, as one PeaceHealth, our family of dedicated caregivers, clinicians, board members and loyal donors like you are making a world of difference that stretches across the local region. Your impact reaches both rural and urban areas, and connects us on the path toward creating a brighter tomorrow for everyone.

We are beyond grateful that you joined us on this important journey with your generous gifts to support our healing mission dating back more than 130 years. From the very beginning, the Sisters of St. Joseph of Peace were driven by their compassionate dedication to care for others. We are honored that you share their commitment and are willing to play such a critical role in carrying this vital work forward.

Incredibly, nearly \$42 million was raised in the last year alone to elevate healthcare across every community we serve. Our latest ambitious and historic fundraising efforts paved the way to ensure that state-of-the-art technologies, leading-edge therapies and exceptional healthcare are always available close to home for all, regardless of any patient's ability to pay.

With you by our side, this momentum will only continue to grow. Your philanthropic gifts are helping to revolutionize how PeaceHealth provides personalized, continuous care from the moment patients enter our doors to when they leave. By staying true to our shared beliefs of respect, connection and compassion, we will continue to deliver exceptional person-first, community-centered care with health equity for everyone. It is wonderful to be part of this life-changing work, together as one PeaceHealth.

Thank you for making a life-saving difference,

Anne Rasmussen, MBA, CFRE, FCEP

FY24 by the numbers



FY24 by the numbers

Total dollars raised	Total number of gifts	Total number of donors	Total number of new donors
\$41,834,949	9,945	6,758	2,510

Charitable gifts to a specific PeaceHealth Foundation stay in the community where they were given.

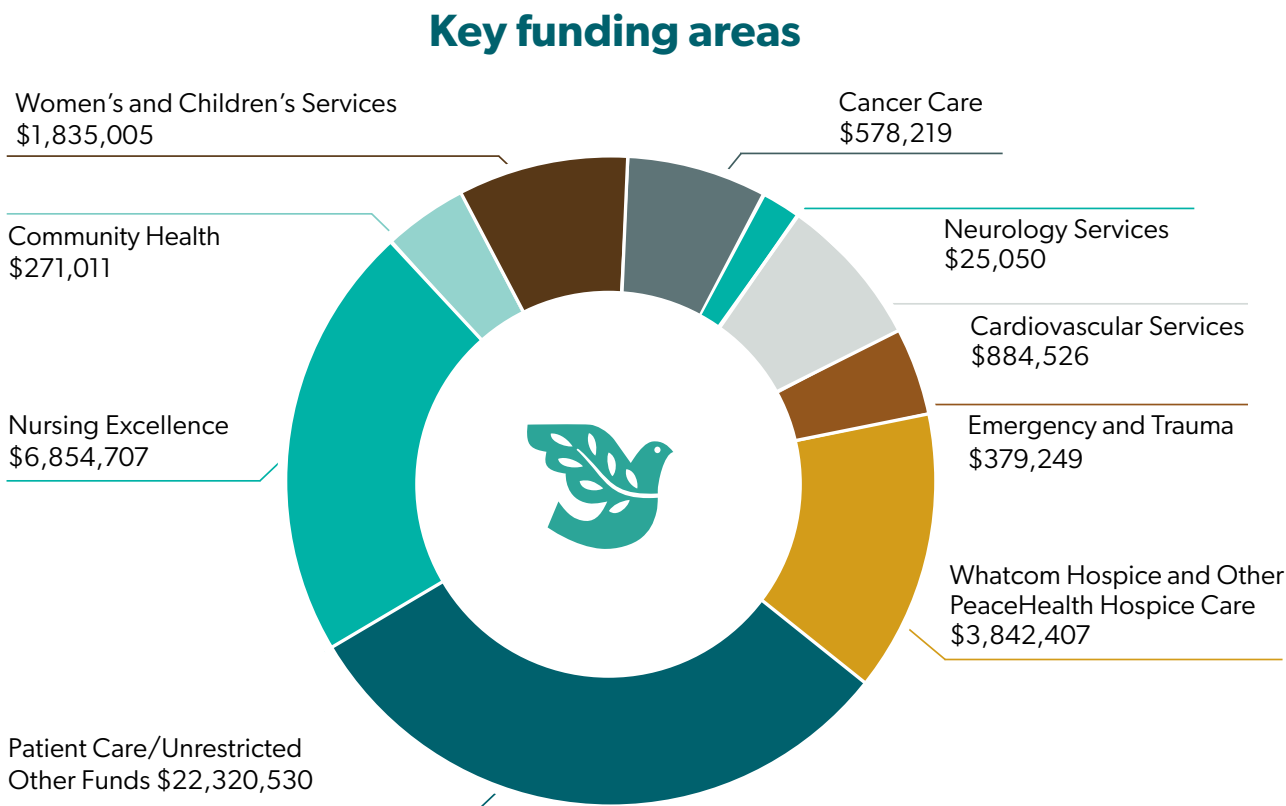
Northwest Network Foundations	Columbia Network Foundations	Oregon Network Foundations
St. Joseph \$16,854,419	Southwest \$13,892,079	Sacred Heart \$5,741,006
Whatcom Hospice \$2,899,137	St. John \$875,030	Peace Harbor \$308,269
Ketchikan \$332,853		Cottage Grove \$436,022
United General \$231,525		

An additional \$264,609 was contributed in FY24 to support systemwide programs.

Areas of impact

Across our communities, large and small — from Ketchikan, Alaska, down to Cottage Grove, Oregon — the transformative impact of philanthropy radiates throughout the entire PeaceHealth network to fuel life-changing and life-saving care, close to home. Together, as one PeaceHealth — powered by caregivers, clinicians, board members and donors — every area of medicine is elevated. Our strong connection to the region means that no matter where we live, exceptional, leading-edge care is never far away.

Thank you for creating greater health, hope and wellness for all!



An additional \$4,844,245 was contributed in FY23 to campaign-specific funds.



Emergency Care

Making history, thanks to you



In 2021, **PeaceHealth Southwest** launched the largest and most ambitious fundraising campaign in Clark County history — *Healthcare Reimagined* — for the major expansion of our **Emergency Department**. We are excited to report that so far we’ve raised \$54 million for the campaign. After two years of construction, the newly remodeled Emergency Department opened in July, marking the successful completion of Phase 1 of the campaign! Your generous support made the amazing possible and we look forward to finishing out this campaign together.

The outpouring of community-caring and giving includes a **\$1 million grant** from the Cowlitz Tribal Foundation Clark County Fund that helped **complete Phase 1 of our new Emergency Department**. Today, PeaceHealth Southwest’s Emergency Department has **doubled in size, is fitted with the latest technology and equipment, and offers 30% more private patient rooms** to better meet the medical needs of our region’s rapidly growing community.

Now, as we enter Phase 2 of the campaign, we’re focused on securing an additional \$6 million to further support the expansion and modernization of the Emergency Department. This includes adding a 24-bed Observation Unit and establishing the Community Health Hub at PeaceHealth Southwest, which will provide expanded resources for patients and caregivers alike. These initiatives ensure we continue delivering safe, compassionate care for every person, every time. **Here’s to the power of your giving!**

“A sudden and erratic heartbeat hit me while I was golfing with a friend. I rushed to the PeaceHealth Southwest Emergency Department. My visit there not only reaffirmed my gratitude for every heartbeat but also strengthened my resolve to support the essential expansion of the emergency services at PeaceHealth Southwest so more people can receive timely, compassionate care when it’s needed.”

— LEE KEARNEY, *Healthcare Reimagined* leadership donor

You create the extraordinary

At **PeaceHealth Ketchikan**, we proudly care for our community by ensuring that world-class medicine is accessible locally for everyone who lives, works and plays in Southeast Alaska. Thanks to your philanthropic support, we’re making great care even greater through the growth and enhancement of our vital emergency services. This includes the much-needed remodel of our CT suite and the purchase of new state-of-the-art CT equipment for more detailed, accurate and higher resolution images than our current model offers. Having expert critical care nearby is essential considering how long it can take to transfer patients off the island in times of urgent medical need. Together, through your generosity, we can ensure that our loved ones and friends never have to seek life-saving emergency care far from home.



“Without PeaceHealth Ketchikan, I most likely would not be able to share this note today. At the risk of being overdramatic, yet another life has been saved, and that one happens to be mine. Amazing care happens so often here that it starts to seem ordinary. But it truly is not. It is extraordinary. I was on the receiving end this time, and I am beyond words thankful.”

— MICHAEL, grateful patient who received our life-saving emergency care

Women’s and Children’s Services



Expanding emergency services for kids

For our small patients in need, your generosity makes a big difference at **PeaceHealth Ketchikan**. A total of **\$19,400 in community support helped to purchase four new pediatric code carts** that provide caregivers with quick access to age-appropriate medical equipment and medications for our youngest patients. Though infrequent, emergency situations involving a critically ill child can be very frightening, especially in a hospital environment designed for adults. **Thanks to you, our new pediatric code carts help ensure the best possible care for children in crisis.**

Your gifts raise breast cancer awareness

In partnership with Northwest Washington Indian Health Board and through the gifts of generous community members like you, **PeaceHealth United General** held a special event in May 2024, Indigenous Pink, to **underscore the importance of early detection and screening in the fight against breast cancer**. Designed to raise awareness about this disease in Native communities, where women are seven percent more likely to develop breast cancer than non-Hispanic white women, the event featured expert speakers and offered free mammograms to attendees. **This is just one example of how your giving helps provide everyone in Skagit County with the best chance to live their healthiest lives.**



You help local children thrive

Thanks to generous charitable support, our Child Life Program at **PeaceHealth Sacred Heart at RiverBend** is growing! Comprised of Certified Child Life Specialists, this innovative program helps infants, children, youth and families cope with the stress and uncertainty of illness, trauma, loss and bereavement. Our Child Life Specialists’ care includes therapeutic play, preparation for procedures and education to reduce fear, anxiety and pain — all proven techniques to enhance pediatric patient outcomes.



Initially supported through your gifts to the Children’s Miracle Network Fund in 2017, we began this program with two part-time Child Life Specialists. Thanks to your continued generosity, we have since **raised another \$1 million to expand our team**, adding Child Life Specialists to serve our Emergency Department and Surgical Services.

Annually, our Child Life Specialists provide **1,500 impactful pediatric patient interventions** and **1,200 supportive interactions** for parents and caregivers. Because of you, we can better serve thousands of young patients in need — at no additional cost to families.



“Our Child Life Specialists help our littlest patients feel cherished and safer during their hospital experience. When patients are calm and relaxed it makes taking care of them easier for all of us.”

— KIM RUSCHER, MD
Pediatric Surgeon and Chief Medical Officer
PeaceHealth Sacred Heart Medical Center at RiverBend

Hospice Care



You help ease the way for others

In the last year alone, **nearly 3,000 Clark County residents and their families** received the best, most compassionate hospice care at **PeaceHealth Southwest**, thanks to you. The exceptional, tender care that you support extends to our Ray Hickey Hospice House (RHHH), a welcoming, peaceful and comforting home-like environment for patients and loved ones during the most daunting times. In celebration of the 20th anniversary of RHHH, we **unveiled our newly remodeled facility in January 2024** — complete with an inviting new patio area, a soothing outdoor water feature and a privacy fence, as well as updated furnishings, lighting and new hardwood floors in each of our 20 patient rooms.

Over the last few years, generous community members like you have stepped forward to help **raise an incredible \$2.2 million to achieve this milestone!** Just as important, **philanthropy accounts for more than \$500,000 annually in charity care** to ensure our hospice services are available to all patients, regardless of their ability to pay.

“Our journey at PeaceHealth Southwest’s Ray Hickey Hospice House was heaven on Earth before going to heaven served by angels. There was such a sweet spirit and so much peace, comfort, caring and unity.”
—JOHNSONS, grateful family



Creating a lasting legacy

When Darrell and his beloved partner of 46 years found out that she had brain cancer, they turned to **Whatcom Hospice**. “It went so fast. But the compassionate folks at Whatcom Hospice came in quickly to make the transition from the hospital to Hospice House as easy and comfortable as possible,” says Darrell. “They were great about keeping me informed. And the wonderful care she received gave her much comfort, and for me, too. Their humanity is amazing.”

Because of this experience, Darrell felt inspired to leave a lasting legacy of life-affirming hospice care for our community. After meeting with our expert Planned Giving team, Darrell decided to include Whatcom Hospice in his will. We are beyond grateful for his legacy gift and for those who’ve chosen to give in the same way. “I’m glad Whatcom Hospice is here. It’s critical,” says Darrell. “I’ve long believed in what hospice caregivers do for people. And when the time came, they were there just like I knew they would be.”

Your gifts of true humanity

At **Whatcom Hospice**, the power of philanthropy knows no bounds in bringing peace, dignity and the most compassionate care to hospice patients and their loved ones in Whatcom County. Your gifts **support more than 150 dedicated and highly skilled hospice caregivers** on staff and **over 200 committed volunteers** who lovingly care for an **average of 250 hospice patients** every day.

From our beautiful hospice house, to our in-home nursing care, to our bereavement services for those grieving the loss of a loved one, our every effort is fueled by your life-affirming generosity. **Together, we’ve raised over \$2.8 million in the last year to ensure that everyone in our community has access to expert hospice care whenever it’s needed, no matter their financial circumstances.**

Neurology Services



Revolutionizing brain and spine care with your help

When every minute counts, having state-of-the-art healthcare nearby can make the difference between life and death — especially for those suffering stroke, aneurysms or other serious neurological disorders. Bolstered by your philanthropic support, our dedicated team of neuroscience experts at **PeaceHealth Sacred Heart at RiverBend** are armed with the most advanced medical equipment. This includes **new biplane technology for faster, more precise treatment**, thereby solidifying our position as a world-class neurological care center in the southern Willamette Valley.

As the only certified Comprehensive Stroke Center between northern California and Portland, we serve thousands of neuroscience patients annually from neighboring areas large and small. Thanks to you, our outstanding neurological care means fewer emergency flights to Portland, along with greater local and regional care close to home. **Through your ongoing charitable investments in people, technology and equipment, there is a healthier, brighter future ahead — with more lives changed and more lives saved in our community.**

100 **Ranked in the top 100 hospitals for spine surgery nationwide**
Access to the latest technology, operated by exceptional caregivers, elevates extraordinary neurological care close to home. Your generosity makes it possible!

One stroke survivor’s uplifting story

On what seemed like any other normal day, Ray’s life took a dramatic, unexpected turn. He was in the parking lot of a grocery store in Springfield, Oregon, when he suffered a sudden stroke. Thankfully, several bystanders jumped into action and called 911. Once first responders arrived on the scene, they soon recognized stroke symptoms. Ray was immediately transported to **PeaceHealth Sacred Heart** at RiverBend, where he was treated with our new biplane equipment. With remarkable precision, the medical team swiftly removed the blood clot to restore blood flow and function.



At a survivor event earlier this year, Ray expressed his heartfelt appreciation for the bystanders, police officers, EMTs and particularly our expert medical staff who all played a role in his healing journey. He was extremely touched to learn that local donors, including the Oregon Community Foundation, supported the advanced biplane technology which helped save him. “I’ve been given another chance and I’m truly grateful... I believe it’s a miracle,” says Ray. Today, he’s enjoying a healthier lifestyle and remains committed to raising stroke awareness.

Ray’s story speaks to the strength of community — and the power of your generosity — to create miracles every day.

Cardiovascular Services



On the road to saving more lives, thanks to you

For our families, friends and neighbors across the southern Willamette Valley, your generous support of **PeaceHealth Sacred Heart at RiverBend** ensures that excellent local care is never far away. And today, thanks to you, critical care is even closer when minutes matter the most! **Through community donations amounting to nearly \$71,000**, and training assistance from our Oregon Heart and Vascular Institute Chest Pain Team, **all 53 patrol cars**

of Lane County Sheriff's Office are now equipped with an **Automated External Defibrillator (AED)**. The biggest impact of this life-saving technology is the way it will greatly speed up response rates in more remote areas, where police are often the first to arrive on the scene of a medical emergency like cardiac arrest or serious accident. **With your help, we're better equipped to serve Lane County than ever before — and save more lives, together!**

“Knowing that community donations have equipped the Lane County Sheriff's Office with AEDs in their patrol vehicles is such an amazing comfort. Because it means that there will be better rural coverage for people who are farther away from medical services — making it possible to save the lives of more of our loved ones.”

— MEGAN, RN
PeaceHealth Sacred Heart Medical Center

Your gifts inspire a healthier community

Every day at **PeaceHealth St. John**, we see how far your giving heart goes to care for the hearts of others. Your generosity continues to change and save lives in Cowlitz County and beyond. **With your philanthropy, more than \$31,603 was distributed last year alone to support our award-winning cardiac care**, recognized among the region's best by the Foundation for Health Care Quality. Thanks to the power of your generosity, our hospital stays up to date by providing essential renovations to our two Cath Labs. These upgrades allow us to serve **more than 1,000 patients annually with the latest technology**, offering a closer look at the heart for improved diagnosis and treatment. **This is a shining example of how, together, we're ensuring that no one in Cowlitz County has to travel far from home for expert cardiac care when it's needed the most.**



“Having PeaceHealth St. John here in our community made the difference between life and death for me. Without PeaceHealth, I could have had a very different outcome. I encourage everyone I know to never take our great local healthcare for granted.”

— BRYCE, heart attack survivor and grateful patient

You create hope and healing

Throughout Whatcom County, our amazing community of collective giving has sparked the very best cardiac care at **PeaceHealth St. Joseph**. Thanks to compassionate donors like you, life-saving care is available right where you live, close to home. Over the past year, you've supported **50 cardiovascular patients** on the road back to health by helping us raise approximately **\$20,000 in Cardiac Rehab Program Scholarships** for the uninsured or those with unaffordable copays. Day after day, your generosity is at the heart of **ensuring healthcare access for neighbors in critical need, funding state-of-the-art equipment and technologies, expanding facilities** and so much more. You help pave the way to leading-edge cardiovascular care for all, regardless of an individual's ability to pay. **We are grateful for your commitment that creates healthier hearts in Whatcom County.**



◀ After cardiac surgery, Joe proudly shows off this special heart pillow signed by his care team. These small acts of kindness take place at PeaceHealth every day and in every community we serve. Your support makes our compassionate care possible!

“Your heart is your life. I'm so grateful for the excellent care I received at PeaceHealth St. Joseph Cardiovascular Center. Having amazing physicians and nurses using the best machines and equipment is priceless. It makes you feel safe.”

— HANNAH, grateful patient

Cancer Care



You help break new ground

We're proud to say that **PeaceHealth United General** continues to stand out as a beacon of hope and healing, removing barriers to healthcare access that many small, remote communities face. Nowhere is this more evident than in the fight against cancer. Last June, dozens of caregivers, project partners and generous donors gathered at the hospital to celebrate the ground breaking for our new high-precision linear accelerator (LINAC). This symbolic event follows years of research, planning and fundraising. The project aims to meet the growing need for advanced local cancer care by boosting capacity, expanding services and upgrading equipment at PeaceHealth United General's 50-year-old Cancer

Center. Once in place, our new LINAC device means we will be home to the most advanced radiation therapy available for cancer patients. It means we'll be able to provide a noninvasive alternative to traditional surgery, improving the accuracy and treatment of tumors that can be difficult to treat surgically. Oftentimes these tumors are found in the brain, lung, spine and prostate. **Through your profoundly generous philanthropic support, our Keeping Cancer Care Close to Home Campaign has raised nearly \$1 million to make this happen!** Together, we're helping more patients in Skagit County — more loved ones, friends and neighbors — helping more people whose lives are affected by cancer.



The entire team at PeaceHealth United General's Cancer Center is stellar! Everyone offers extremely attentive, expert care and compassionate support. The caregivers work so smoothly together. They're also fun to talk to and get to know. I feel blessed for this exceptional facility. My infusion days are so comfortable that I call them 'spa days.'

— CHARLES, grateful patient



You make a lasting difference

Every single day at **PeaceHealth St. John**, we see the real power of your giving to improve lives all across Cowlitz County. Through generous charitable support from friends and neighbors like you, we're able to deliver lifesaving medicine to our local community while meeting national levels of excellence. Nowhere is this more evident than in our advanced cancer care. Last year, **198 individuals received treatments** like chemotherapy and immunotherapy. Another **156 patients accessed our leading-edge radiation services**. And it all takes place right here at home.

Because of you, we continue to innovate. **Last year, \$85,000 in philanthropic support was used to implement leading-edge SCOUT radar localization technology** at our Kearney Breast Center. Now, we're **better equipped to treat early-stage breast cancers**, ease the surgical process for our patients — and arm our surgeons with the latest breast conservation equipment available. But that's not all! You helped **fund the installation of a new state-of-the-art ceiling lift** that allows far more comfortable and efficient transfers for our immobile patients. **The impact you have on our community is truly transformative.**



I didn't expect the level of care I received at PeaceHealth St. John in Longview because it is such a small town. If you are going to have someone take care of you though, this staff is as good as it gets."

— JOHN, grateful patient

Your gifts give second chances

World-class care close to home — that's what you and everyone else in Bellingham, Washington, can always count on at **PeaceHealth St. Joseph**. This care is possible because of you! Over the past year, we've witnessed the amazing force that takes hold when philanthropy is put to work creating greater wellness for our entire community, especially in the fight against cancer. **Collectively, compassionate supporters like you raised more than \$200,000 to help 15,601 patients who receive our expert cancer care.** Your gifts enabled us to hire **two new nurse practitioners and another skilled medical oncologist**. On top of that, you helped us acquire the **latest innovative CT technology** last spring, while supporting an **Oral Chemotherapy Program** to improve medication management and patient care. Moreover, our **survivorship program continues to grow**, offering multiple support services like yoga classes and other wellness therapies for patients who complete treatment. **Thank you for investing in a healthier Whatcom County!**



When I discovered I had a cancerous brain tumor, I immediately put my trust in PeaceHealth St. Joseph. The surgeon and staff did an excellent job. I am truly grateful for their abilities, experience and obvious knowledge. Now that I've moved to the next chapter in life as a cancer survivor, I still turn to PeaceHealth for their amazing survivorship support. I look forward to future days spent with my children and grandchildren. Thank you!"

— BETSY, grateful patient



Nursing Excellence



Your gifts advance comfort and healing

All across the PeaceHealth system, our dedicated nurses go above and beyond to care for us with true compassion and expert skill, emitting a bright light on the lives of others when help is needed the most. Here at [PeaceHealth Sacred Heart at RiverBend](#), philanthropy supports them on the journey to be the best they can be and enables bold new initiatives like the Oregon Institute for Nursing Excellence. What's more, charitable support of the institute is building a network of expert nursing care that extends to [PeaceHealth Cottage Grove](#) and [PeaceHealth Peace Harbor](#). Over the past year, we've seen an incredible outpouring of community support, **raising nearly \$2.8 million to fund ongoing efforts in the areas of nurse retention, professional practice and innovation!**

This includes a transformational \$1.5 million grant from The Coeta and Donald Barker Foundation to establish The Coeta and Donald Barker Foundation Nurse Residency Endowment, aimed at supporting the retention, growth and development of new nurses at PeaceHealth Sacred Heart for years to come. The program centers on education, mentorship and team building, along with advanced simulation training and specialty care curriculums. Already, the program is showing remarkable success, **retaining 95% of participants since it started. This speaks volumes about the power of philanthropy to advance excellent nursing care close to home.**



During my family's most crucial time, PeaceHealth Sacred Heart cared for us like we were family. I am a huge supporter, and truly grateful we have a local hospital with such a first-class medical team, including outstanding nurses who go the extra mile every time."

— HERBERT, grateful patient

A legacy of compassion

Without question, the nurses and caregivers at [PeaceHealth Southwest](#) are an essential part of everything we do to uplift the lives of our loved ones, neighbors and friends in Clark County, day after day. Deeply moved by seeing firsthand the impact of our talented caregivers' unwavering passion and dedication, Julie and Bill Reiersgaard felt compelled to express their gratitude. In a transformative gesture, the couple pledged **\$5 million to our Healthcare Reimagined Campaign** earmarked for two causes that truly resonate with them: a commitment to ensuring nursing expertise and a dedication to acquiring state-of-the-art equipment for that purpose. **We are beyond grateful for the Reiersgaard family's generosity — and the continued support of people like you — that enables the best, most compassionate healthcare in our community.**



Healthcare is a dynamic field, the definition of best practice changes over time as we learn new and better techniques to care for patients. Our teams want to provide the most advanced care possible to all of our patients — and they can do that when they have the training and education to do so."

— TANYA SHANKS-CONNORS, MSN, MBA, RN
Chief Nursing Officer at PeaceHealth Southwest Medical Center

You promote pathways to better care



Each day at [PeaceHealth St. Joseph](#), we recognize the potential and purpose of our incredible nurses to heal others. In an effort to drive innovation, spark positive change and achieve even higher levels of care for every patient, we're empowering our impassioned nurses on the path toward developing and transforming their essential leadership skills. It's all part of our **Leading hArtfully Program**, inspired by acclaimed professional coach Diane Rogers and author of *Leading hArtfully: The Art of Leading Through Your Heart to Discover the Best in Others*.

This conversation-based coaching approach focuses on communication skills, peer-to-peer coaching, self reflection and mutual support. The program's overarching goal? To foster new levels of excellence, engagement and leadership commitment for improved patient outcomes. Now in its third year, our **Leading hArtfully Program** is guiding nurse leaders to facilitate leadership trainings for other caregivers, embedding the program's concepts into our culture of healing.

Through our Institute for Nursing Excellence, largely fueled by your philanthropy, we're expanding this program into the Emergency Department, and anticipate carrying its success forward across all fields of medicine. **Together, we're reaching new heights of nursing care that benefit Whatcom County. Thank you.**

Changing lives in perpetuity



For Keith Schnip, the outstanding care he received at [PeaceHealth St. Joseph](#) made giving back an easy choice. Because as he tells it, our expert cardiology team, including the amazing nurses who were there for him day and night, helped save Keith's life.

In an expression of grace, compassion and care for the well-being of others, Keith made an extraordinary \$2 million estate gift to support Nursing Excellence at PeaceHealth St. Joseph. "A person really can't make a better investment than investing in PeaceHealth. I'm interested in what I can do to make other people's lives better," says Keith. His appreciation for the crucial role nurses play in our health is also deeply rooted in the fact that Keith's own mother dedicated her professional life to nursing care for many years. Thank you, Keith, and those who have joined you in creating legacies of greater health for our community. **Your transformational planned gifts are destined to make an impact for decades to come.**

You help nurses innovate

Throughout [PeaceHealth Peace Harbor](#), innovations in care are part of the norm. Take, for instance, our latest simulation training project, which represents a significant advancement in trauma education for our nurses.



Although we don't see many trauma cases in our rural area, thankfully, it's essential that our caregivers be prepared for when they occur. By using real-time simulations, this new training model provides hands-on, competency-based education to address the unique challenges facing healthcare professionals in our community. As part of the Institute for Nursing Excellence, it directly contributes to better patient outcomes by empowering caregivers to respond more effectively in emergency situations. **This project exemplifies the transformative power of your philanthropic support to accelerate care innovations that help our nurses change and save more lives on the Oregon Coast — thank you.**

Community Health



Your gifts nourish bodies and souls

At [PeaceHealth St. John](#), caring for our community doesn't just exist within our hospital walls. It stretches far beyond to address critical patient challenges like food insecurity which can greatly impact a person's overall health and well-being. Through your wonderful generosity, our **Food Farmacy** is filling the gap between hospitalization and home for individuals admitted to PeaceHealth St. John who report having trouble accessing critical nutrition. **With you by our side, we've enrolled over 450 patients in our Food Farmacy Partnership, providing nearly 1,400 meals and some 4,300 pounds of fresh fruits, vegetables and high-protein foods.** Charitable giving also supports our **PeaceHealth St. John Meals on Wheels Program** for patients who are unable to grocery shop, prepare their own meals or have no place to cook — oftentimes this includes unhoused patients who are discharged to transitional housing or motels. These combined efforts lead to greater patient wellness and fewer hospital re-admissions. **Thank you for feeding the health and spirits of our neighbors in need!**

Changing lives by changing care, together

In an effort to provide true whole-person care for our patients, prioritizing both medical and non-medical needs, [PeaceHealth Southwest](#) has been able to count on our community — and you! — to **secure \$8.5 million for the launch of an incredible new initiative, our Community Health Hub.** This ambitious endeavor is innovating how we compassionately care for our neighbors with complex needs by integrating essential social services into our Emergency Department.

Now, thanks to you, we can ensure that patients facing issues such as behavioral health disorders, addiction, homelessness, food insecurity and domestic violence have direct access to essential health and social services, all under one roof. Located on the second floor of our Emergency Department, the Community Health Hub is a welcoming, collaborative space, where our not-for-profit community partners are on-site to support our most vulnerable patients. **This means they won't leave the Emergency Department without being connected to key social services that can aid in better health, thanks to you.**

Our Community Health Hub partners include:

- Council for the Homeless
- Share (caring for the homeless and hungry)
- YWCA Clark County
- 4D Recovery
- Columbia River Mental Health Services
- Lifeline Connections
- Recovery Café Clark County
- NWCAVE*
- Sea Mar Community Health Centers

“The National Women's Coalition Against Violence & Exploitation (NWCAVE*) is proud to enhance our long-standing partnership with PeaceHealth Southwest. Since 2020, our Dignity Clothing Program has clothed thousands of patients and now our Advocacy Center for Justice can increase our services through the Community Health Hub. PeaceHealth's vision of a healthier and safer community will be accomplished by the many social service agencies they have brought together in order to provide the support to the Emergency Department at the time of need.”

— MICHELLE BART
Founder of NWCAVE



You help us care for the whole person

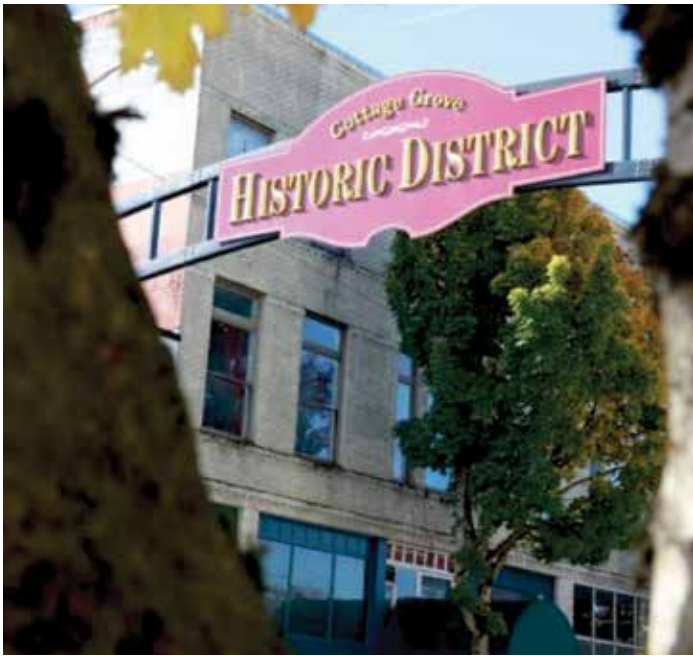
Thanks to widespread community support [PeaceHealth Peace Harbor](#) has expanded its Rehabilitation and Wellness Center to enhance care for those in need. **Because of this \$1.3 million dollar project,** we're now able to offer more disease prevention education programs to Florence residents and others on the Oregon Coast. We're also delivering increased and improved accommodations for specialized inpatient and outpatient care, close to home. This project marks the center's first upgrade since its initial opening in 2007 and has allowed us to meet a broader scope of patient needs, including lymphedema services, chronic pain intervention, low vision and driving assessments, neurological rehabilitation, sports rehabilitation and women's health services. **What a shining example of how we care for the whole person and uplift our entire community. We owe it largely to you!**

Uplifting those in need

At [PeaceHealth Ketchikan](#), we compassionately care for all — thanks to you. Charitable giving is felt across our community, assisting PeaceHealth patients who struggle on a daily basis just to afford life's essentials. Last year, you helped us provide taxi vouchers and bus tokens for patients who don't have access to transportation. Your generosity enabled us to offer financial assistance for critical prescriptions and ensure patients in need have new, clean clothing upon discharge from the hospital. **We're grateful for your giving heart that makes a difference in people's lives.**

Creating a healthier home for all, because of you

As part of our Community Health Fund created by Starfire Lumber Co. and amplified by other philanthropic gifts from friends like you, [PeaceHealth Cottage Grove](#) is elevating the health of our patients and neighbors in innovative ways. The Community Health Fund supports everything from local wellness events and health fairs to outreach at area schools that promote the medical profession. At the same time, the fund works to ensure that our community health workers have the resources necessary to care for those in need who live among us, hoping to prevent future hospitalization or disability. **Thank you for joining the effort to strengthen our community!**



“There's a spectrum of reasons we think it's important to get this fund going. Cottage Grove is a town large enough to need a broad range of medical capabilities, but also one that needs the resources necessary to offer services to people in all different circumstances. Anything we can contribute to make Cottage Grove more livable benefits all.”

— SEAN SMITH
CEO, Starfire Lumber Co.

Voices of gratitude

These words from our grateful patients echo the power of your support to change and save lives in your community!

“Each time, my care has been wonderful. I refuse to go to any other hospital facility. The doctors and nurses are outstanding. That’s why I choose to give back through my charitable support.

— MARCY K.
PeaceHealth Southwest

Thank you for the care you and your staff give. You go above and beyond your duties for my health needs!

— RENEE F.
PeaceHealth Cottage Grove

All of you saved me from the worsening of my stroke. You worked together so beautifully – like a dance! Your expert care and kindness have inspired my charitable support.

— ELIZABETH R.
PeaceHealth Peace Harbor



All emergency department personnel treated me phenomenally well. I will always be grateful for the care I received.

— JOHN P.
PeaceHealth Ketchikan

Thank you for saving our daughter’s life. Emily is happy and healthy because of all of you.

— SEBASTIAN M.
PeaceHealth Sacred Heart at RiverBend

Hospice house offered the most perfect loving care for my sister in the final part of her journey. I cannot find words to express gratitude.

— COLLINS C.
Whatcom Hospice

Thanks to you, I will hunt and fish again!!!

— DAVID G.
PeaceHealth St. Joseph

We are blessed that PeaceHealth is so close-by and the doctors and nurses who work there are so concerned about our health. I give them a 10+ for all they do!

— CARLY M.
PeaceHealth United General

Everyone took good care of me and I’m alive because of the Lord and them. But I’m also here today because of the many donors who support PeaceHealth. Thanks to you all!

— SANDRA S.
PeaceHealth St. John

Foundations supported by you



Columbia Network Foundations

PeaceHealth Southwest Medical Center Foundation

P.O. Box 1600 | Vancouver, WA 98668
360-514-3106
peacehealth.org/foundation/sw-washington

PeaceHealth St. John Medical Center Foundation

P.O. Box 3002 | Longview, WA 98632
360-414-7900
peacehealth.org/foundation/st-john

Oregon Network Foundations

PeaceHealth Sacred Heart Medical Center Foundation

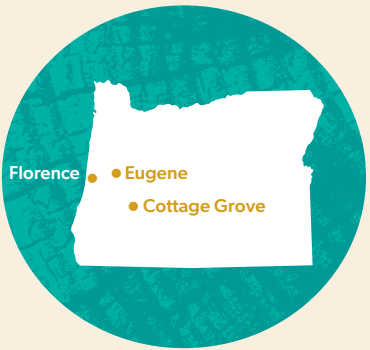
P.O. Box 10905 | Eugene, OR 97440
541-222-7100
peacehealth.org/foundation/sacred-heart

PeaceHealth Peace Harbor Medical Center Foundation

400 Ninth Street | Florence, OR 97439
541-902-6589
peacehealth.org/foundation/peace-harbor

PeaceHealth Cottage Grove Community Medical Center Foundation

1515 Village Drive | Cottage Grove, OR 97424
541-222-7100
peacehealth.org/foundation/cottage-grove



Northwest Network Foundations

PeaceHealth St. Joseph Medical Center Foundation

2901 Squalicum Parkway | Bellingham, WA 98225
360-788-6866
peacehealth.org/foundation/st-joseph

Whatcom Hospice Foundation

2901 Squalicum Parkway | Bellingham, WA 98225
360-788-6866
www.whatcomhospice.org

PeaceHealth United General Medical Foundation

2000 Hospital Drive | Sedro-Woolley, WA 98284
360-788-6861
peacehealth.org/united-general-medical-center

PeaceHealth Ketchikan Medical Center Foundation

3100 Tongass Avenue | Ketchikan, AK 99901
907-228-8300 ext. 7037
peacehealth.org/foundation/ketchikan





Creating a healthier tomorrow, because of you



**Thank you for changing and saving lives
in our communities!**



PeaceHealth
Foundations

Please donate at peacehealth.org/foundation/donate-local